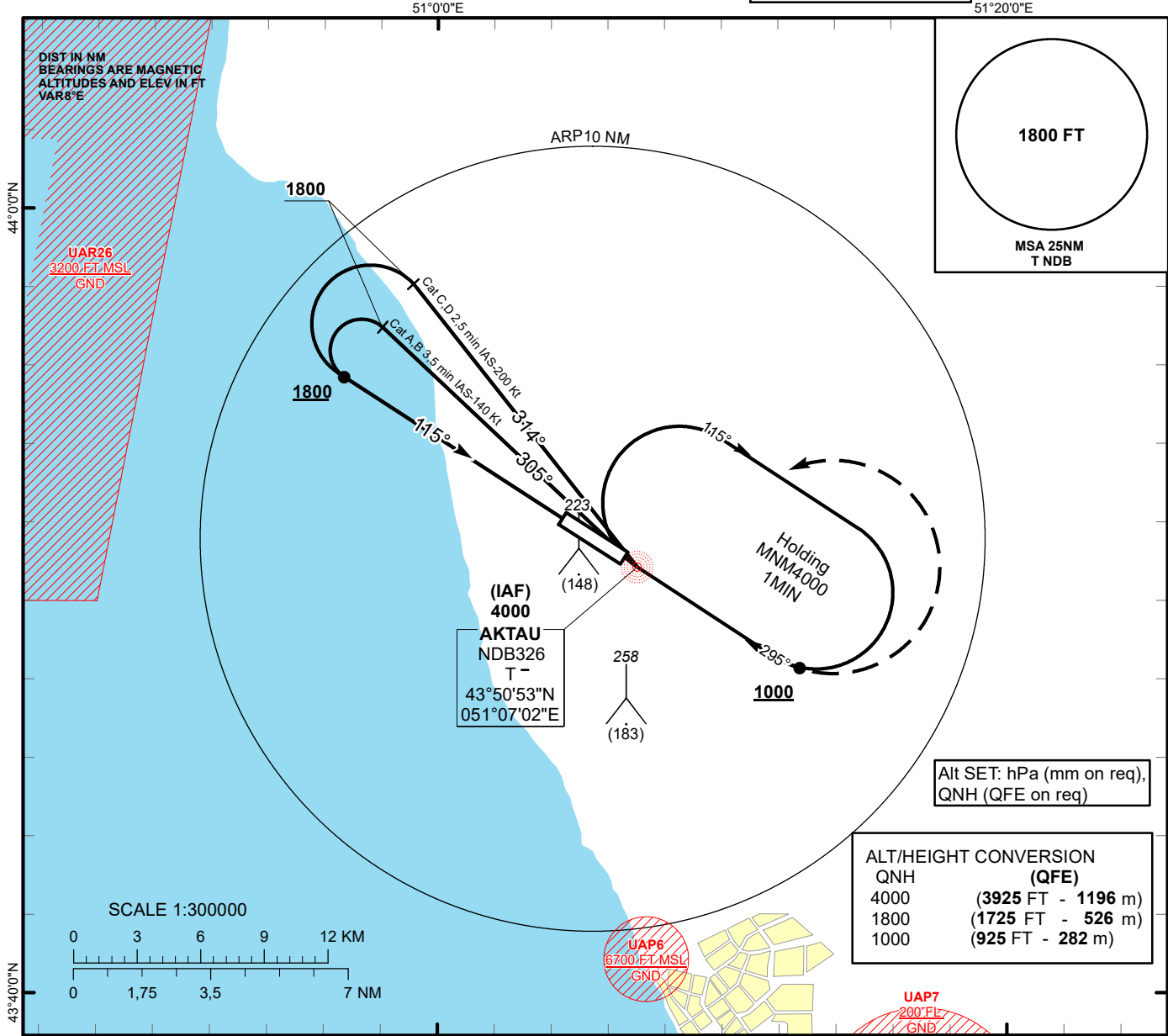


INSTRUMENT  
APPROACH  
CHART - ICAO

AERODROME ELEV 75 FT  
THR RWY 11 - ELEV 71 FT  
HEIGHTS RELATED TO AD ELEV

AKTAU TOWER 120.70  
AKTAU ATIS (EN) 130.1  
AKTAU ATIS (RU) 126.2

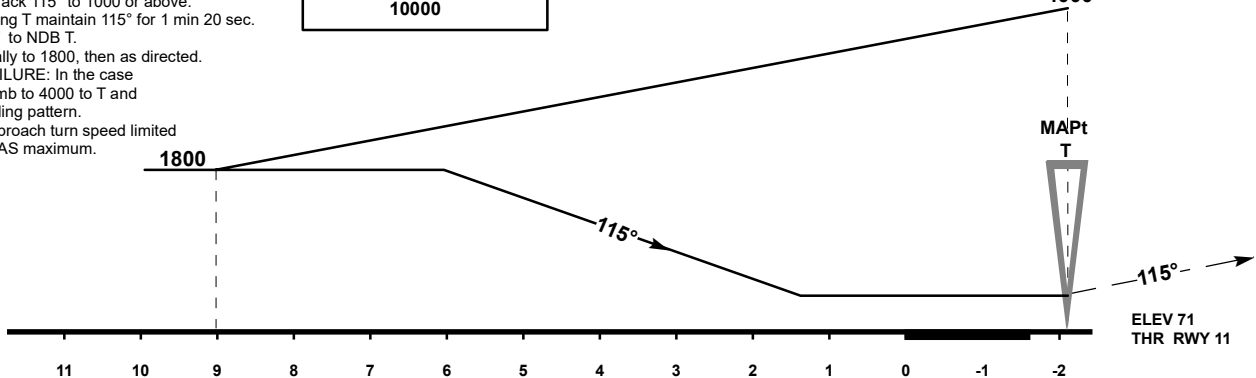
AKTAU  
BC NDB  
RWY 11



MISSED APPROACH

Climb on track 115° to 1000 or above.  
After passing T maintain 115° for 1 min 20 sec.  
Turn LEFT to NDB T.  
Climb initially to 1800, then as directed.  
RADIO FAILURE: In the case  
of RCF climb to 4000 to T and  
join to holding pattern.  
Missed approach turn speed limited  
to 250 Kt IAS maximum.

TRANSITION ALT  
10000



Aircraft Category		A	B	C	D
Straight-in Approach OCA/H	BC NDB	530(460)	530(460)	530(460)	530(460)
Aerodrome Operating Minima MDH ft x RVR(CMV)	BC NDB				

AKTAU  
BC NDB

AERONAUTICAL DATA TABULATION

NDB approach to RWY11 from T NDB	
Fix/point	Coordinates
T NDB (IAF)	43° 50' 52.6"N 051° 07' 01.8"E
THR RWY 11	43° 52' 03.01"N 051° 04' 29.51"E